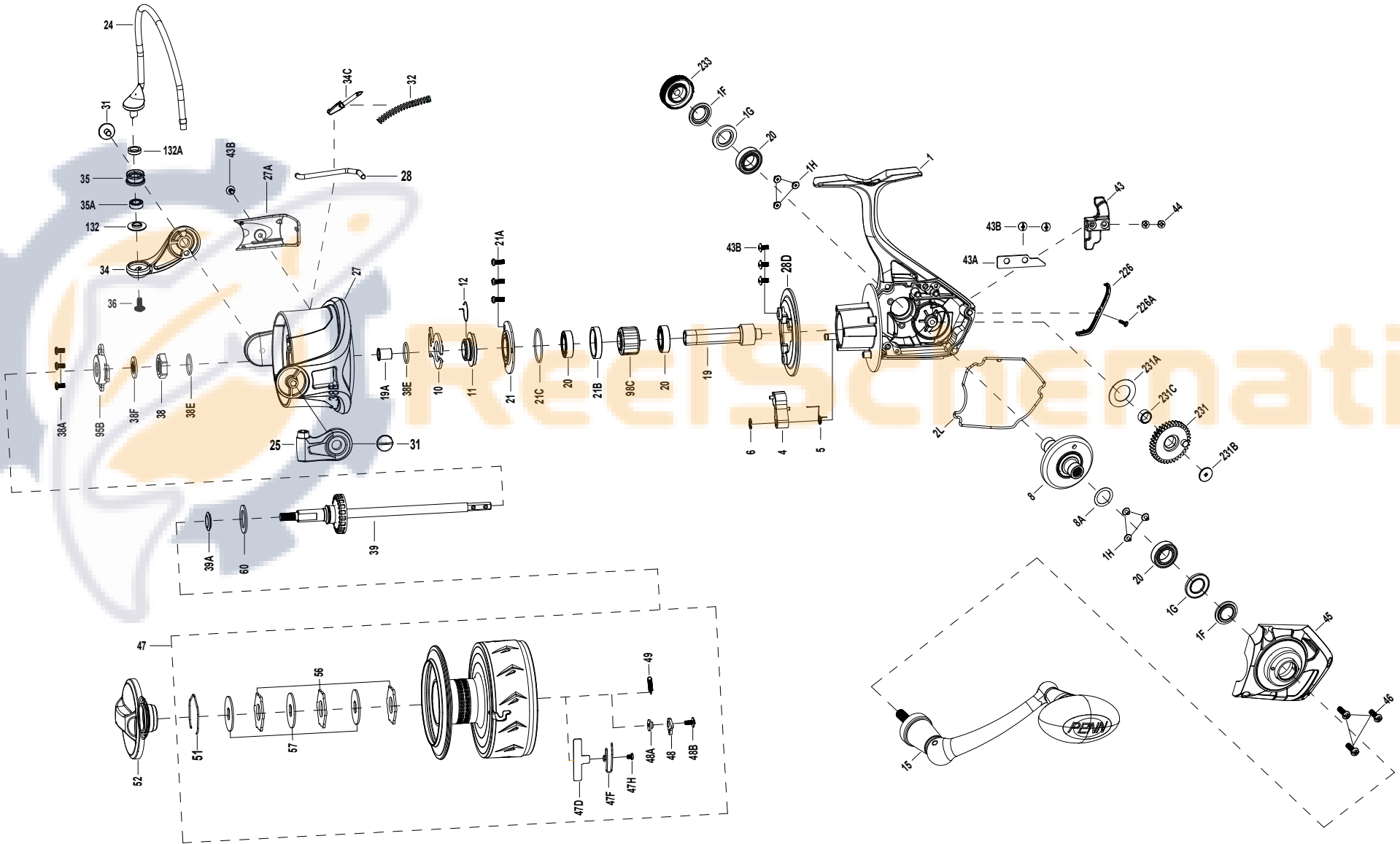




SSVII7500 EXPLODED DRAWING





Thank you for your recent PENN gear purchase. No matter where you fish or what you fish for, you can depend PENN to perform in any battle day in and day out. Now it's time to get your product registered and get out on the water.

<https://register.pennfishing.com>

KEY NO.	PART NO.	PENN STYLE NO.	DESCRIPTION
1	1612359	1-SSVII7500	Housing Assembly
1F	1489289	1F-SSVI7500	Main Gear Seal Ring(2 req)
1G	1489288	1G-SSVI7500	Seal Plate(2 req)
1H	1489176	1H-SSVI3500	Bearing Screw (6 req)
2L	1489290	2L-SSVI7500	Housing Seal Ring
4	1489291	4-SSVI7500	A/R Pawl
5	1489292	5-SSVI7500	Pawl Spring
6	1190979	6-5000SG	Retaining Clip
8	1489293	8-SSVI7500	Main Gear
8A	1216652	8A-7000FRC	Shim
10	1489294	10-SSVI7500	A/R Holder
11	1489295	11-SSVI7500	Bushing
12	1489296	12-SSVI7500	Bushing Spring
15	1489297	15-SSVI7500	Handle Assembly
19	1489298	19-SSVI7500	Pinion Gear
19A	1489299	19A-SSVI7500	Pinion Bushing
20	1489300	20-SSVI7500	Ball Bearing (4 req)
21	1489301	21-SSVI7500	Bearing Retainer
21A	1192645	21A-5000SG	Screw (3 req)
21B	1489302	21B-SSVI7500	Collar
21C	1489303	21C-SSVI7500	Bearing Retainer O-Ring
24	1489304	24-SSVI7500	Bail Wire
25	1489305	25-SSVI7500	Bail Holder
27	1489306	27-SSVI7500	Rotor

KEY NO.	PART NO.	PENN STYLE NO.	DESCRIPTION
27A	1489307	27A-SSVI7500	Bail Pivot Cover
28	1489308	28-SSVI7500	Trip Lever
28D	1489309	28D-SSVI7500	Rotor Brake
31	1489310	31-SSVI7500	Bail Arm Screw (2 req)
32	1489311	32-SSVI7500	Bail Spring
34	1489312	34-SSVI7500	Bail Arm
34C	1489313	34C-SSVI7500	Pivot Arm
35	1489314	35-SSVI7500	Line Roller
35A	1242222	35A-5000BTL	Line Roller Bearing
36	1191699	36-3000SG	Bail Stud Screw
38	1489315	38-SSVI7500	Rotor Nut
38A	1489316	38A-SSVI7500	Rotor Nut Screw(3 req)
38E	1489317	38E-SSVI7500	Rotor O-Ring(2 req)
38F	1489318	38F-SSVI7500	Main Shaft Seal Ring
39	1489319	39-SSVI7500	Main Shaft Assembly
39A	1489321	39B-SSVI7500	Spool Seal
43	1489322	43-SSVI7500	Crosswind Block
43A	1489323	43A-SSVI7500	Crosswind Block Plate
43B	1489213	43B-SSVI3500	Plate Screw (6 req)
44	1191845	44-5000SG	Screw (2 req)
45	1489324	45-SSVI7500	Housing Cover Assembly
46	1191903	46-5000SG	Screw (4 req)
47	1612360	47-SSVII7500	Spool Assembly

KEY NO.	PART NO.	PENN STYLE NO.	DESCRIPTION
47D	1612339	47D-SSVII2500	Line Clip
47F	1612356	47F-SSVII6500	Line Clip Spring
47H	1529492	47H-BTLIII5000	Line Clip Spring Screw
48	1211625	48-5000SG	Click Tongue
48A	1489326	48A-SSVI7500	Click Tongue Washer
48B	1489327	48B-SSVI7500	Spool Click Screw
49	1211627	49-5000SG	Click Tongue Spring
51	1489328	51-SSVI7500	Drag Retaining Ring
52	1489329	52-SSVI7500	Drag Knob Assembly
56	1308114	56-CFT5000	Drag Washer (3 req)
57	1489330	57-SSVI7500	Keyed Washer (3 req)
60	1489320	39A-SSVI7500	Thrust Washer
95B	1489331	95B-SSVI7500	Rotor Locking Plate
98C	1489332	98C-SSVI7500	Clutch/Sleeve Assembly
132	1489333	132-SSVI7500	Roller Washer
132A	1489334	132A-SSVI7500	Line Roller Bushing
226	1489335	226-SSVI7500	Rear Cover
226A	1489227	226A-SSVI3500	Rear Cover Screw
231	1489336	231-SSVI7500	Crosswind Gear
231A	1489337	231A-SSVI7500	Crosswind Gear Washer
231B	1489338	231B-SSVI7500	Crosswind Gear Screw
231C	1489339	231C-SSVI7500	Crosswind Gear Sleeve
233	1489340	233-SSVI7500	Bearing Cover Assembly